

Audience: Instructional leaders

# Unpacking the ELPAC

## *Aligning ELD Instruction to Assessment*

- Examine released, non-secure practice items for the new ELPAC
- Reflect on the instructional implications of the new assessment
- Build a plan to further align ELD instruction to the expectations of the ELPAC
- Take back resources to train teachers and students

## Elementary (K-5)

Wednesday, November 29, 2017

8:30—12:00

Ocean Pacific Rooms - Santa Cruz COE



**Register online at:** <http://santacruz.k12oms.org/930-135661>



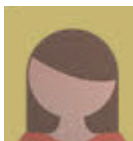
## Secondary (6-12)

Thursday, January 11, 2018

8:30—12:00

Board Room - Santa Cruz COE

**Register online at:** <http://santacruz.k12oms.org/930-135663>



*Also being offered:*

**ELPAC Administration and Scoring Training**

December 12 and 14, 2017

*for Test Examiners and District Coordinators*

