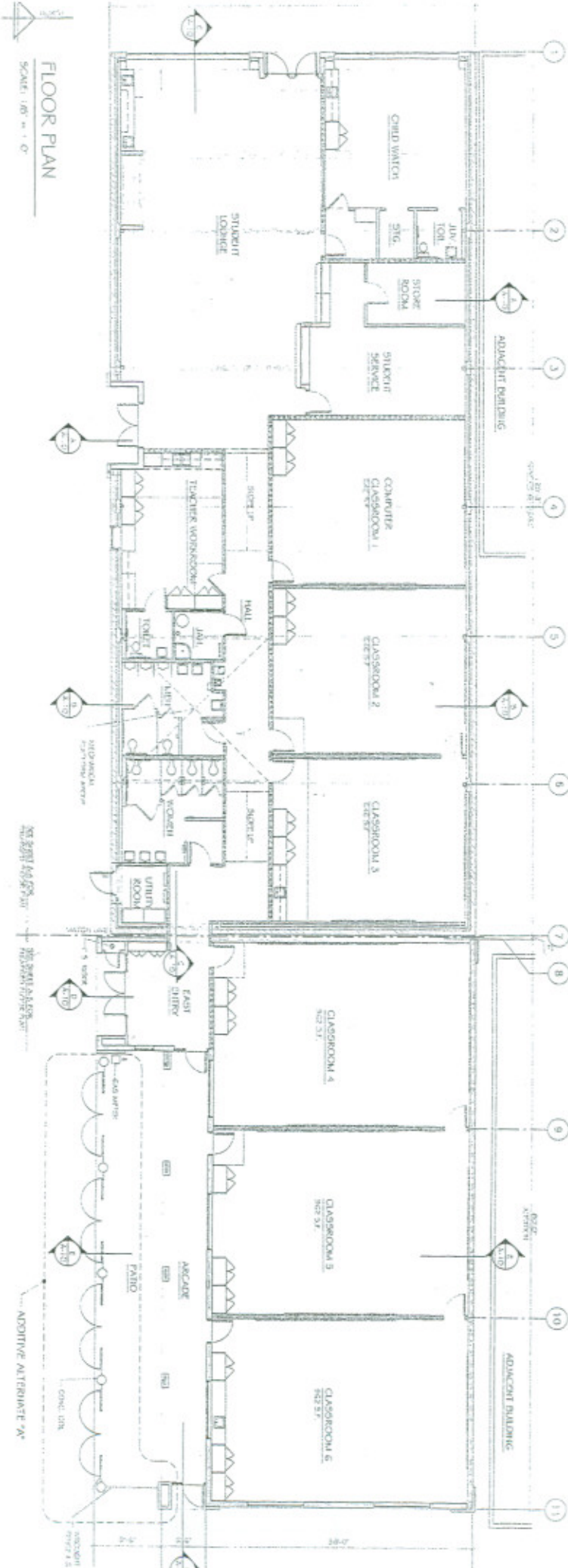




**Adult Education, Institute of Language & Culture**

320 Rodriguez Street, Watsonville, CA 95076

Aerial Photo Taken 4/6/09



FLOOR PLAN  
SCALE: 1/8" = 1'-0"

Watsonville/Aptos Adult School - Annex

SEP 1988  
1000 S. WATSONVILLE AVENUE  
WATSONVILLE, CA 95070  
DRAWN BY: J. BROWN

2 of 2

CEILING PLAN



## **Restroom Facility Counts for ILC**

<b>Type of Restroom</b>	<b>Number of Restrooms</b>	<b>Total Number of Fixtures</b>		
		<b>Toilets</b>	<b>Urinals</b>	<b>Sinks</b>
Staff	1	1		1
Womens	1	4		3
Mens	1	2	3	5
Boys/Girls	1	1		1
Clrms. & Lounge				6

**Total number of drinking fountains on site = 2**