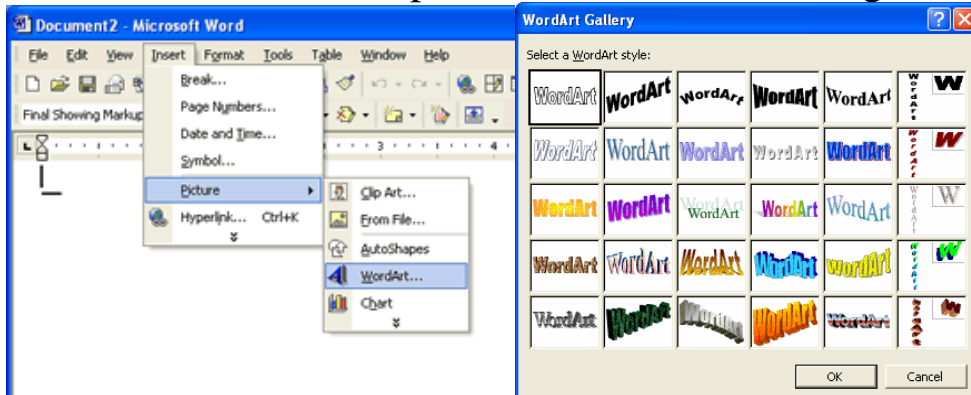
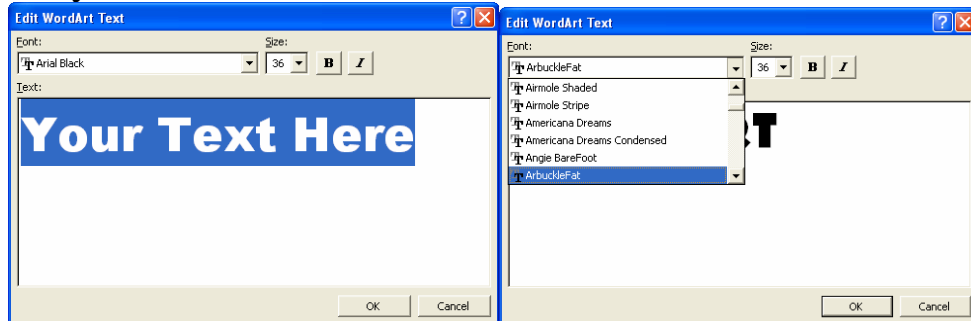


Word Art Weiser

- To start word art, click open the “insert” menu at the top. Move the mouse pointer to the option “picture.” Click on the “word art” option in the menu on the right.



- Then click on the style that you want and click “ok.” Remember the ones in the right column go vertically. The rest run horizontally.
- Push backspace to erase the “your text here” message, then type what you want.



- You can also change the font if you like by clicking in the font box. Then click “ok.”
- You can then drag the title from the center to where you want it on the page. Drag the edges and corners to make it the size and shape that you want. For classroom signs, you may want to go to page setup in the file menu and change the orientation to “landscape.” You can then drag the edges so that the words fill the entire page. You can always double click the word art to change it.