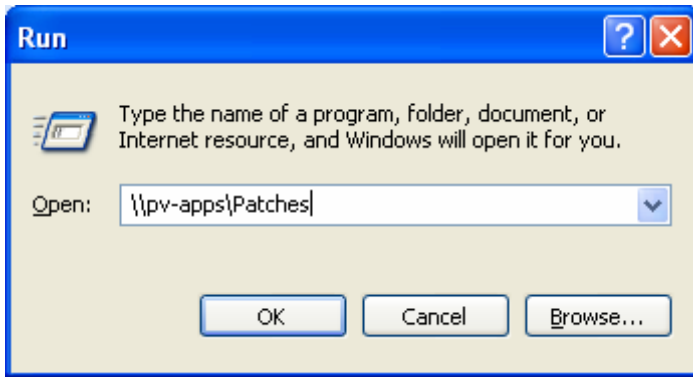


Installation of Citrix Program Neighborhood

1. Click **Start**, select **RUN** and type in `\\pv-apps\patches`. Click **OK**.



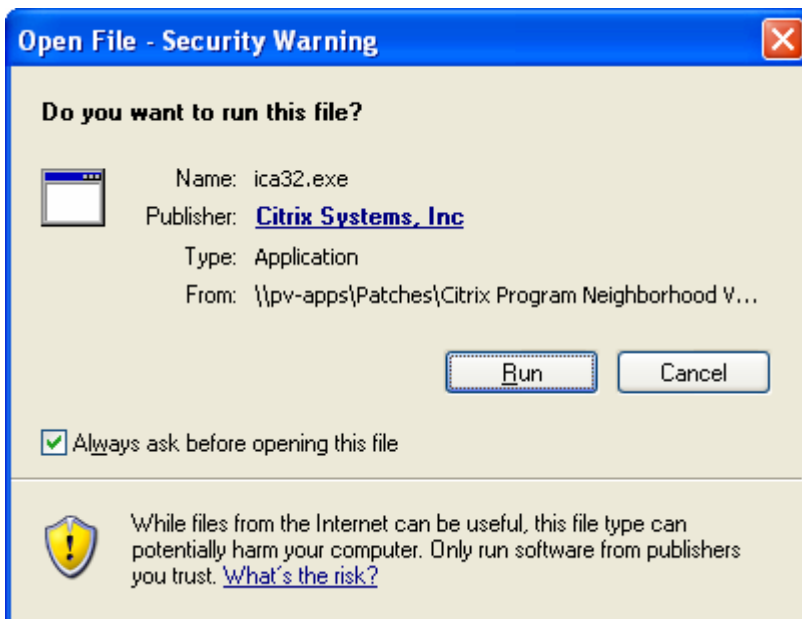
2. Open the folder 'Citrix ICA Client 9.0'



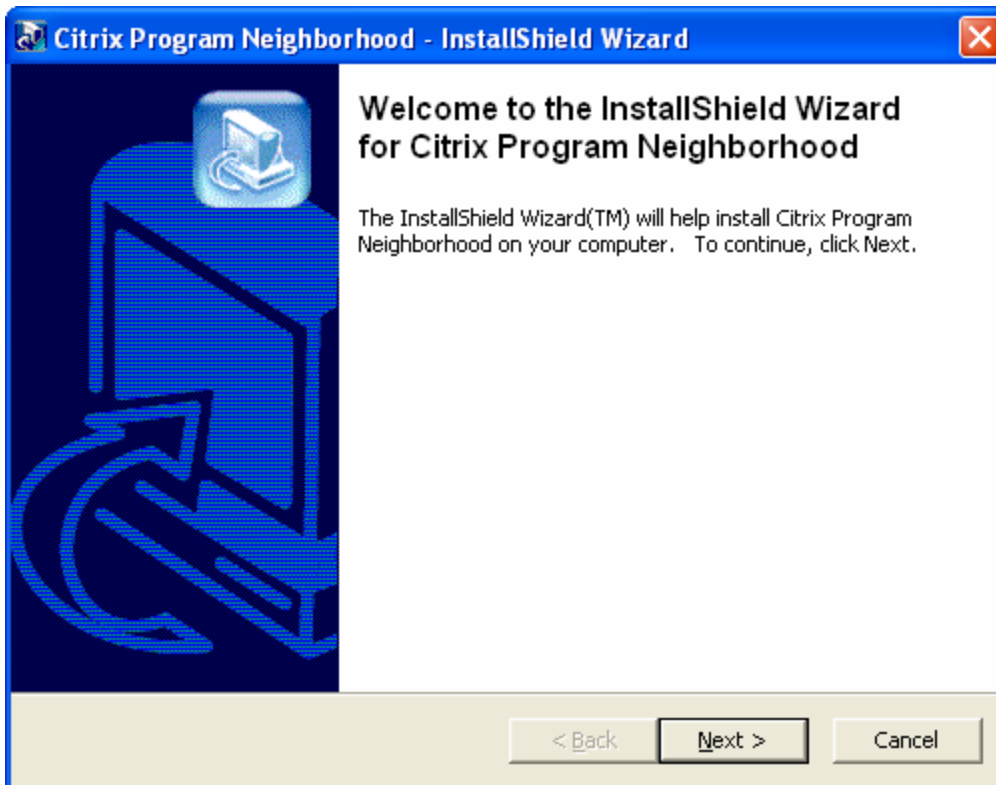
3. Double Click the program 'ica32.exe'.



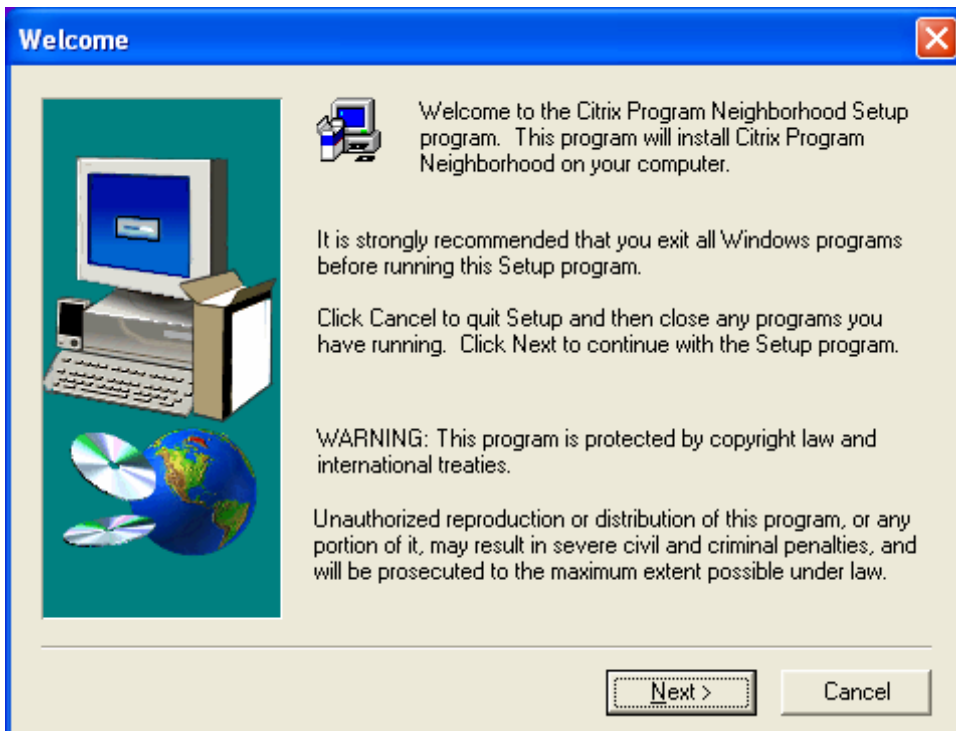
4. If you see a dialog box like this, click **Run**.



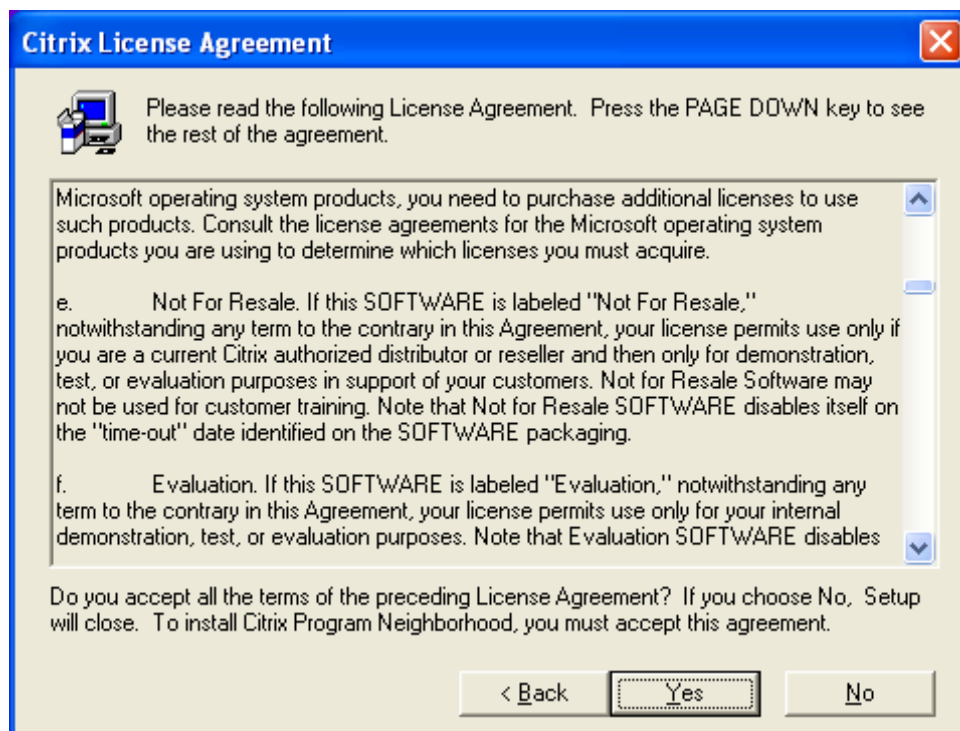
5. Click **Next**.



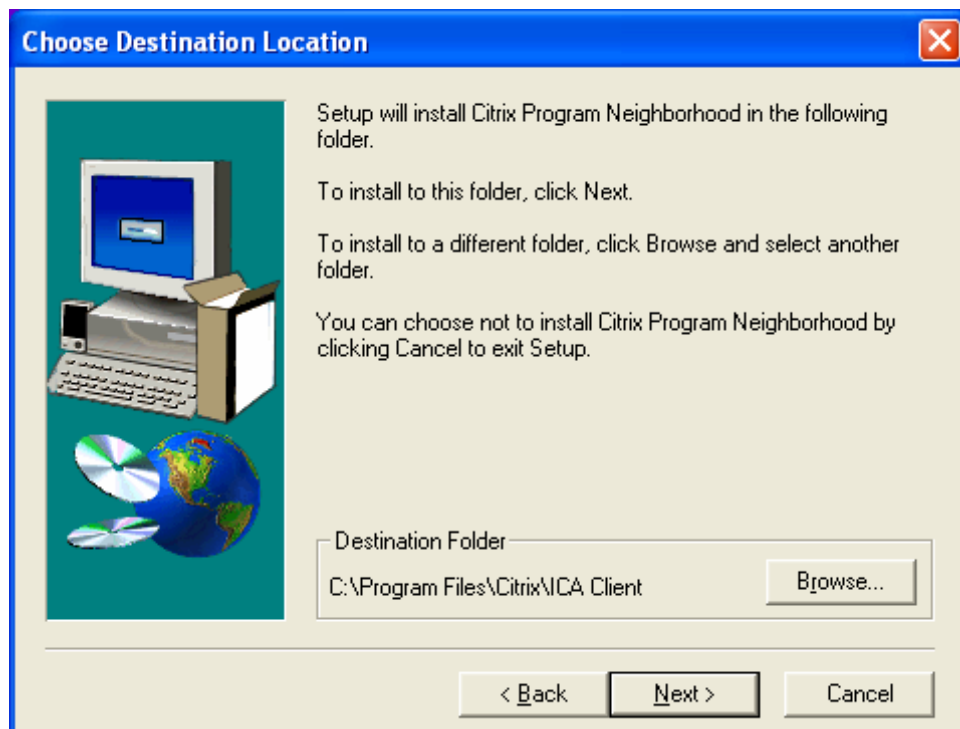
6. Click **Next**.



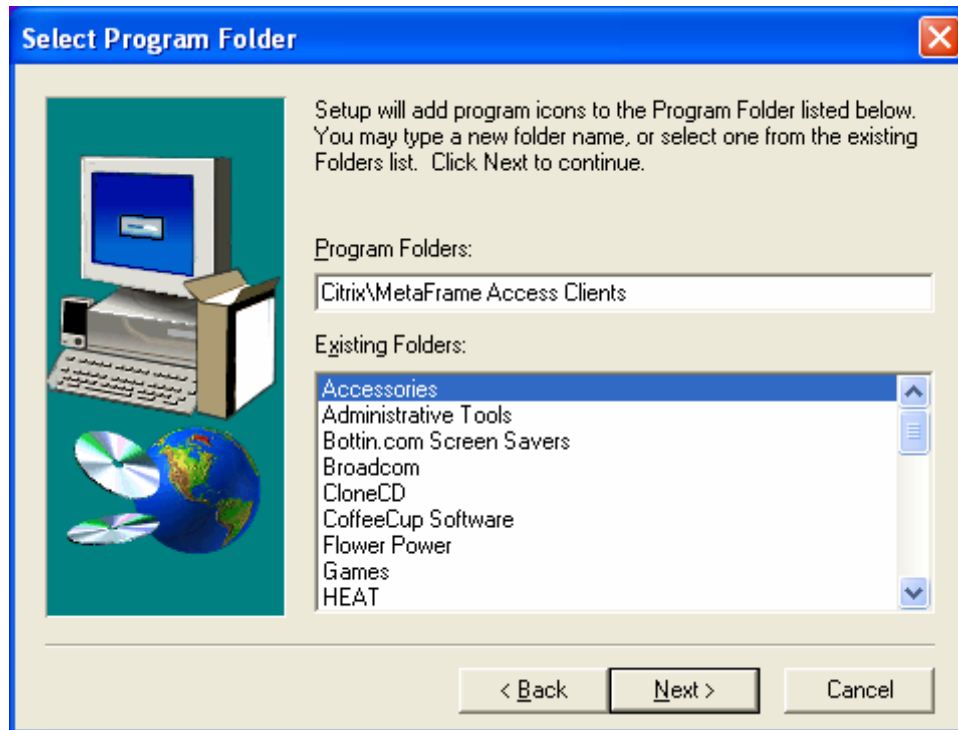
7. Click **Yes** to agree the terms of the License Agreement.



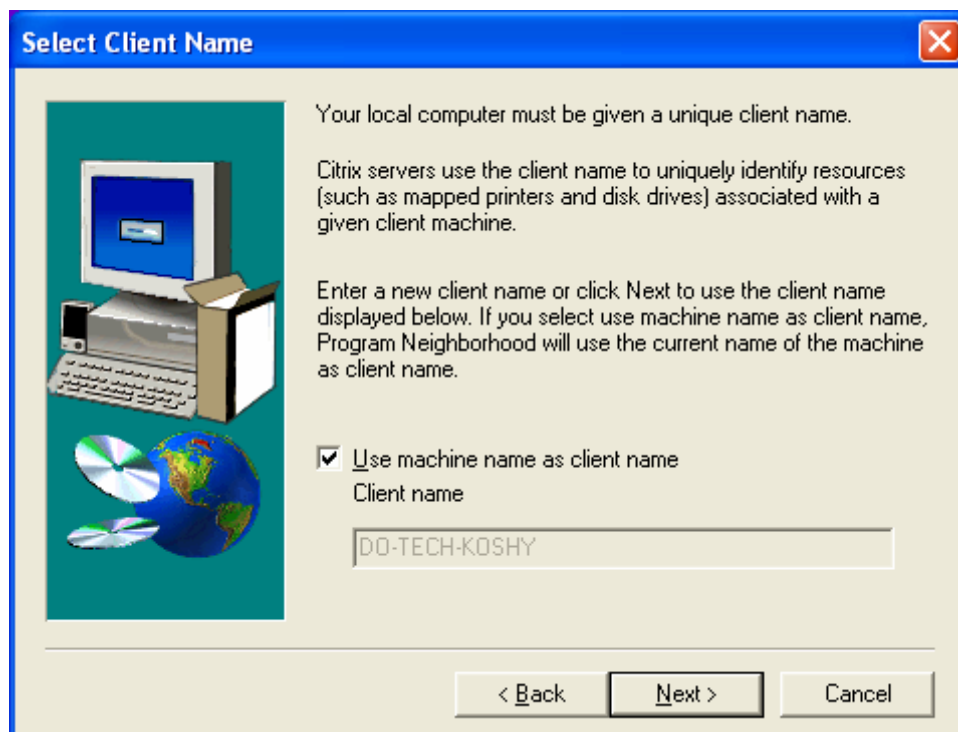
8. Click **Next** to install the Citrix Program Neighborhood to the Destination Folder.



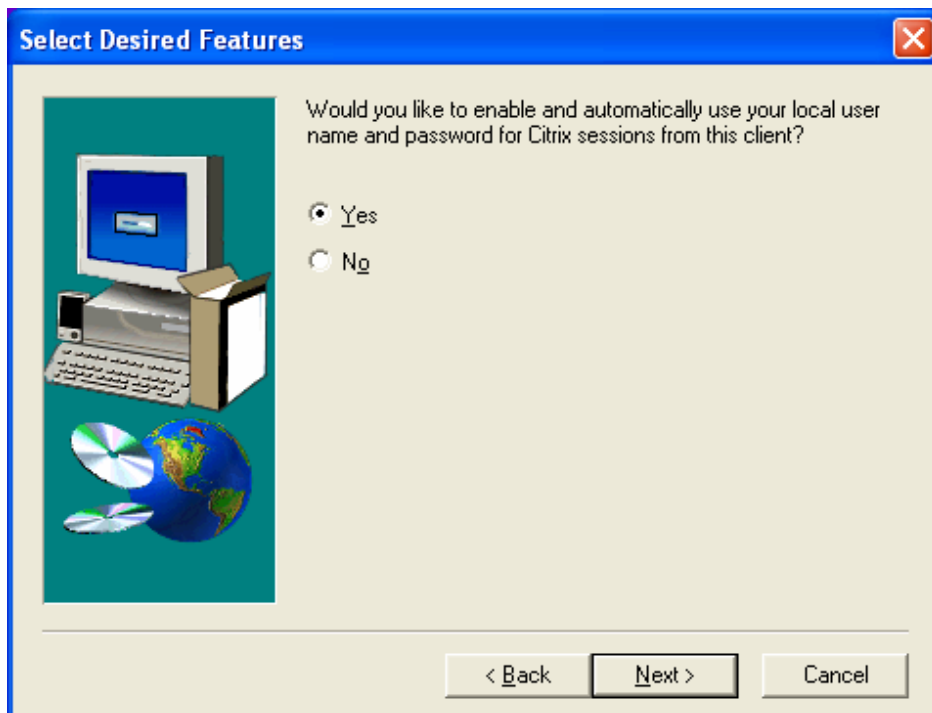
9. Click **Next**.



10. Leave this screen alone, this is the default. Click **Next**.



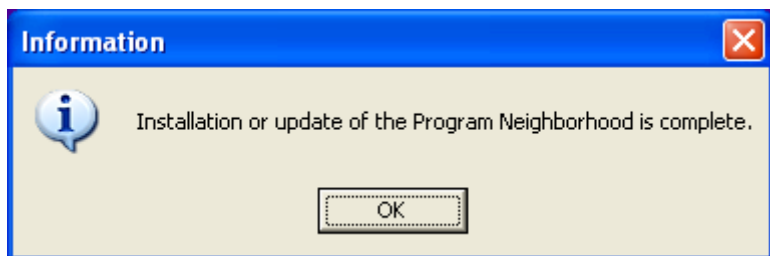
11. Select **Yes**, so that you do not have to type in your password again. Click **Next**.



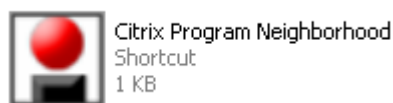
12. **Uncheck** Enable Quick Launch Bar (Optional). Click **Next**.



13. The installation continues and Finishes. Click **OK**.



14. Meta Frame Access Clients folder is created and opens with the Citrix Program Neighborhood icon.

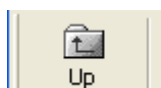


15. **Restart** the computer (This is required for automatic username and password to work.)

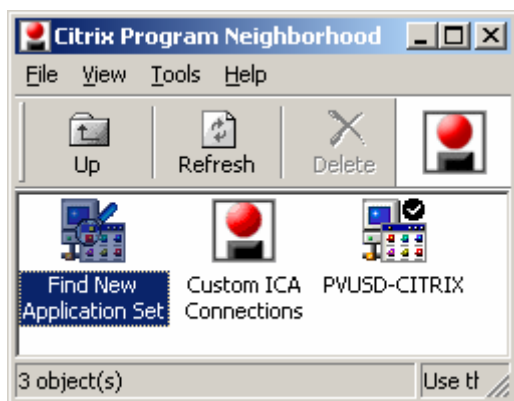
16. **Double Click** the Citrix Program Neighborhood icon to open the Custom ICA Connections Folder.



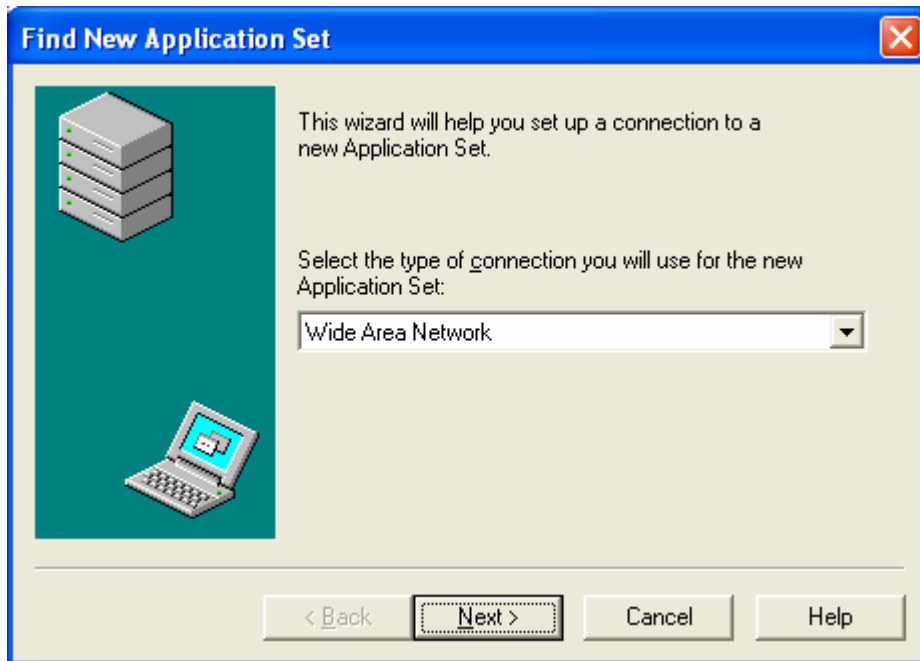
17. **Click** on the Up button.



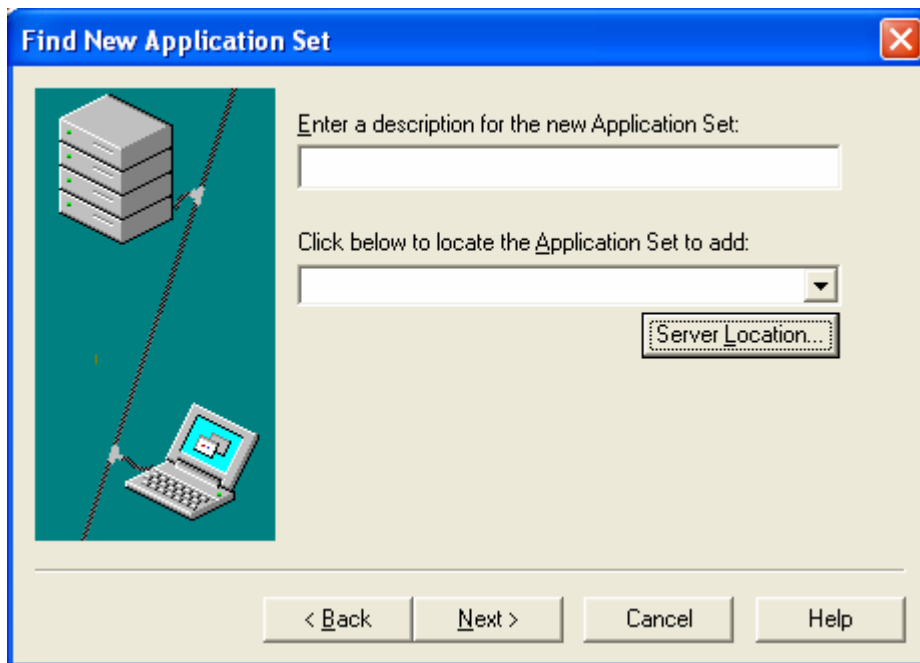
18. **Double click** on Find new application set.



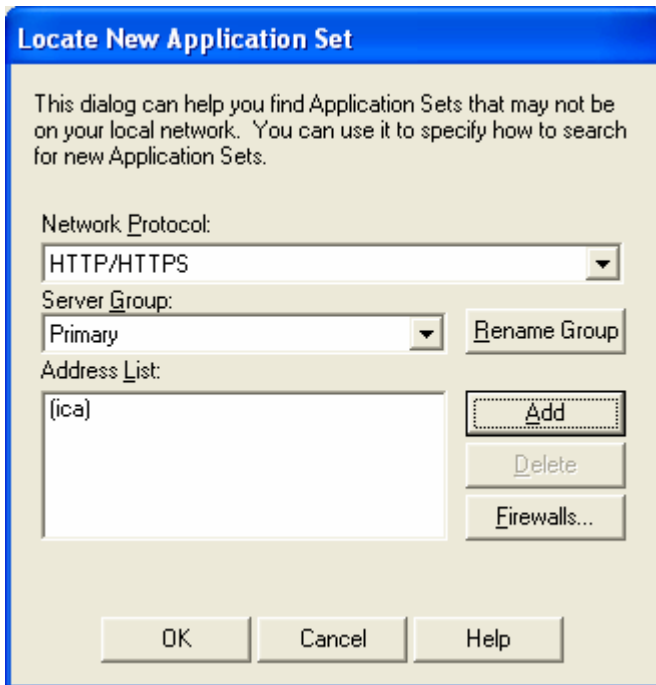
19. **Select** Wide Area Network and click **Next**.



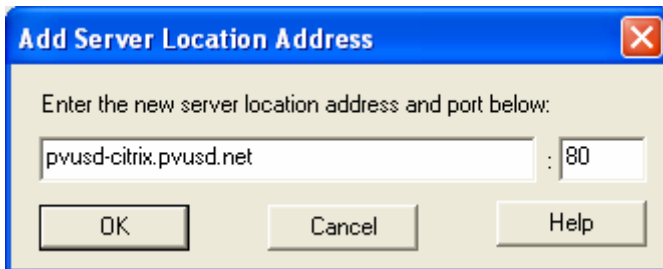
20. **Click** on Server Location



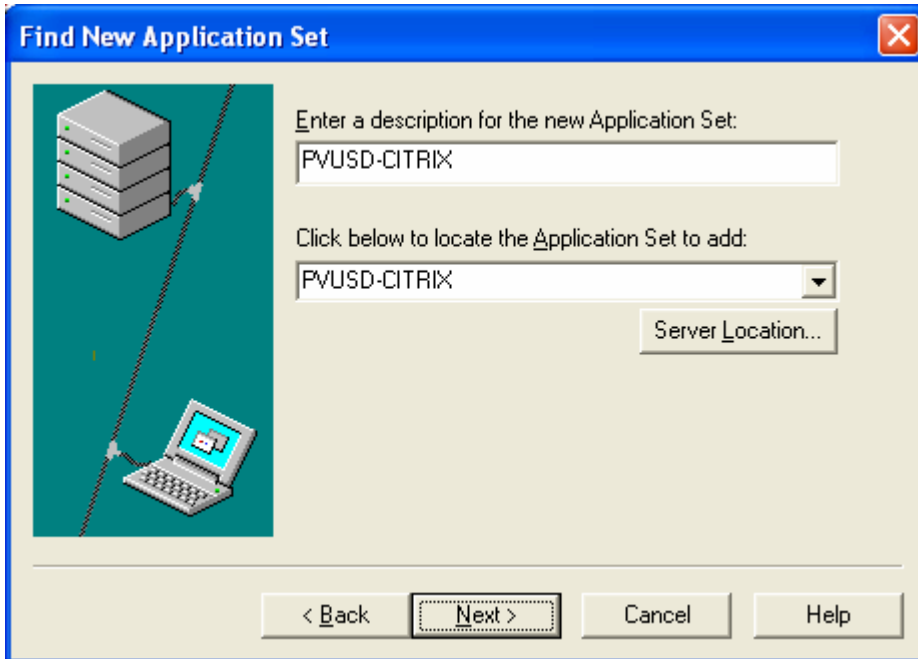
21. Click Add



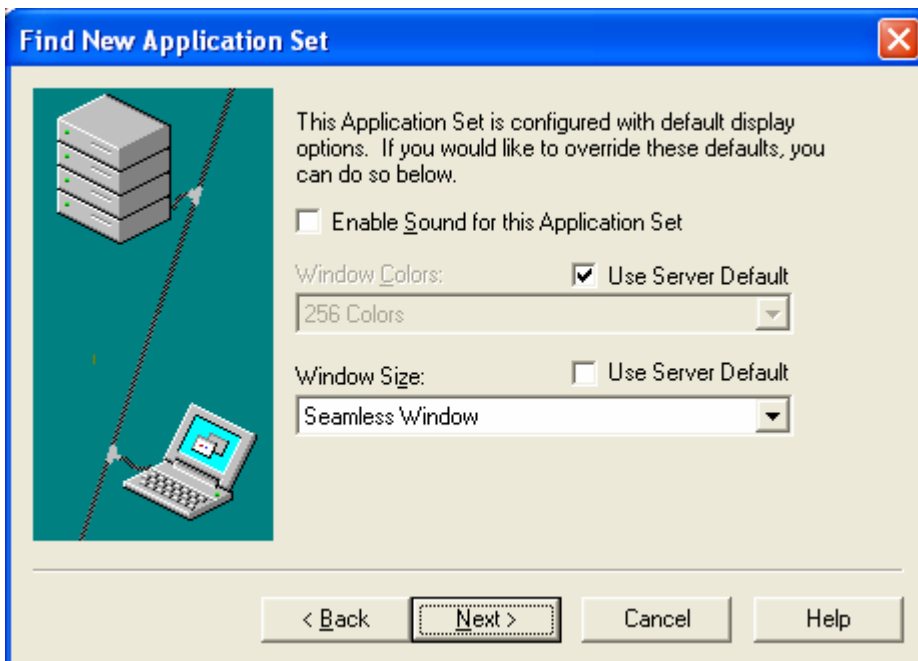
22. Enter Server location **pvusd-citrix.pvusd.net** and click **OK**.



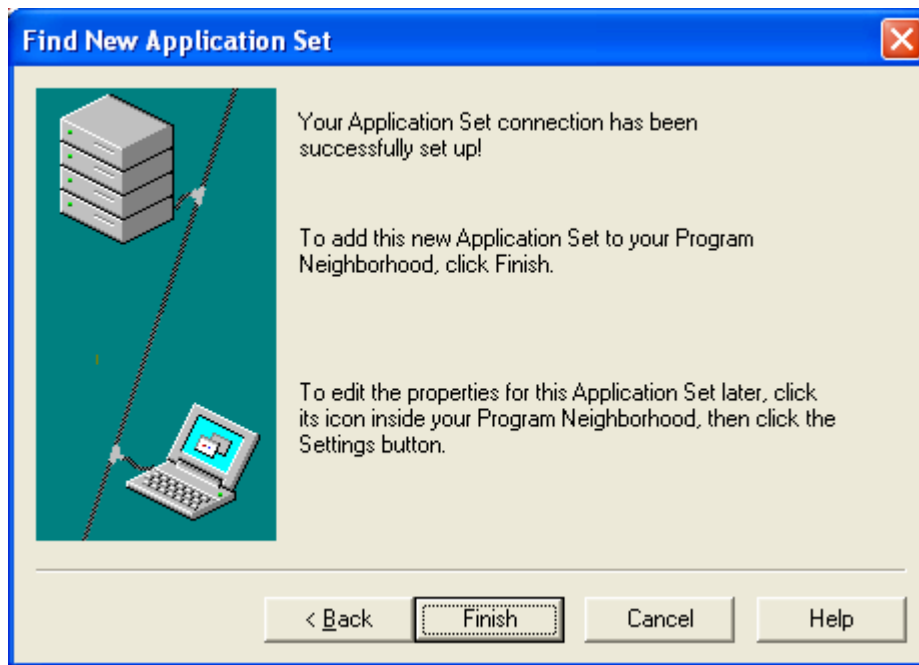
23. **Click** the drop down arrow and wait a little bit. PVUSD-CITRIX will show up. **Click PVUSD-CITRIX**. Click **Next**.



24. Click **Next**.

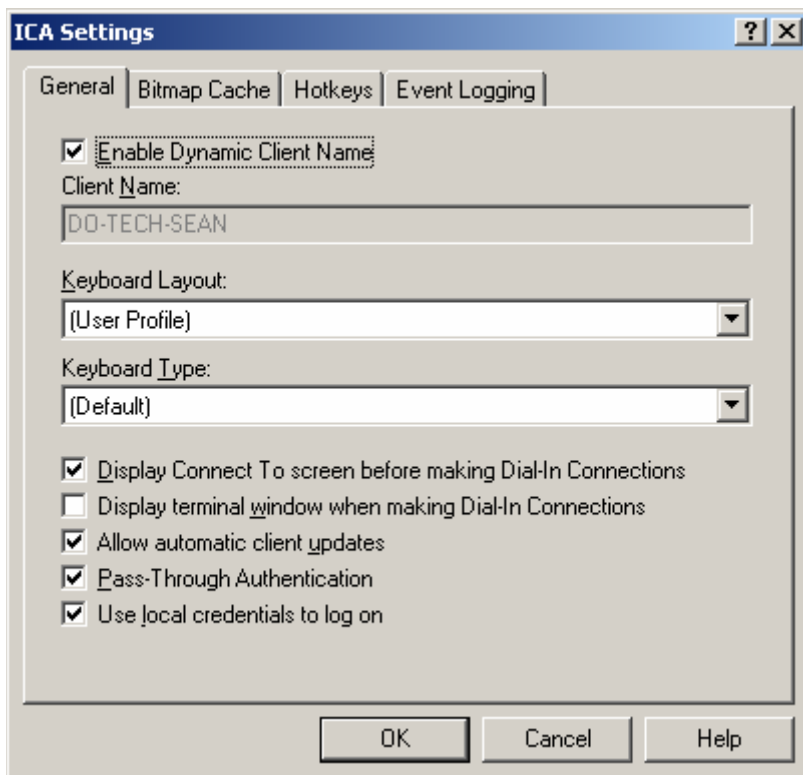


25. Click **Finish**.

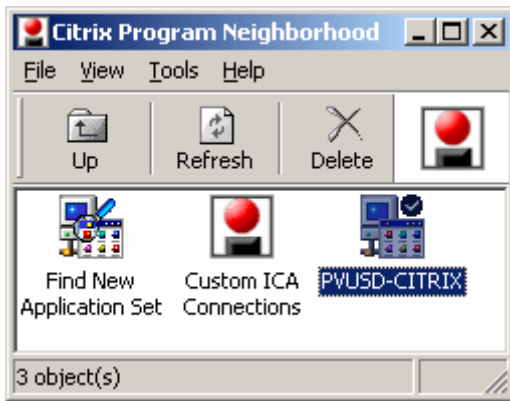


26. From the **Tools** menu choose **ICA Settings...**

27. Make sure that **Pass-Through Authentication** and **Use local credentials to log on** are **Checked**. Click **OK**.



28. **Select** the PVUSD-CITRIX icon.

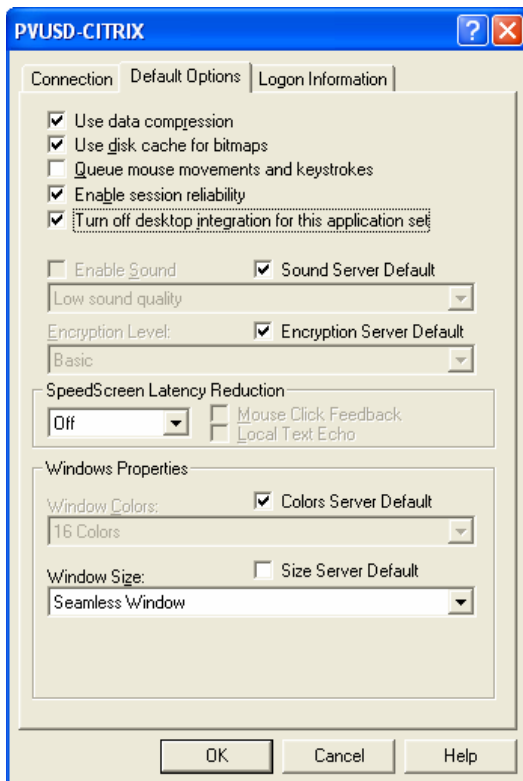


29. **Right click** PVUSD-CITRIX and **choose Set as Default.**

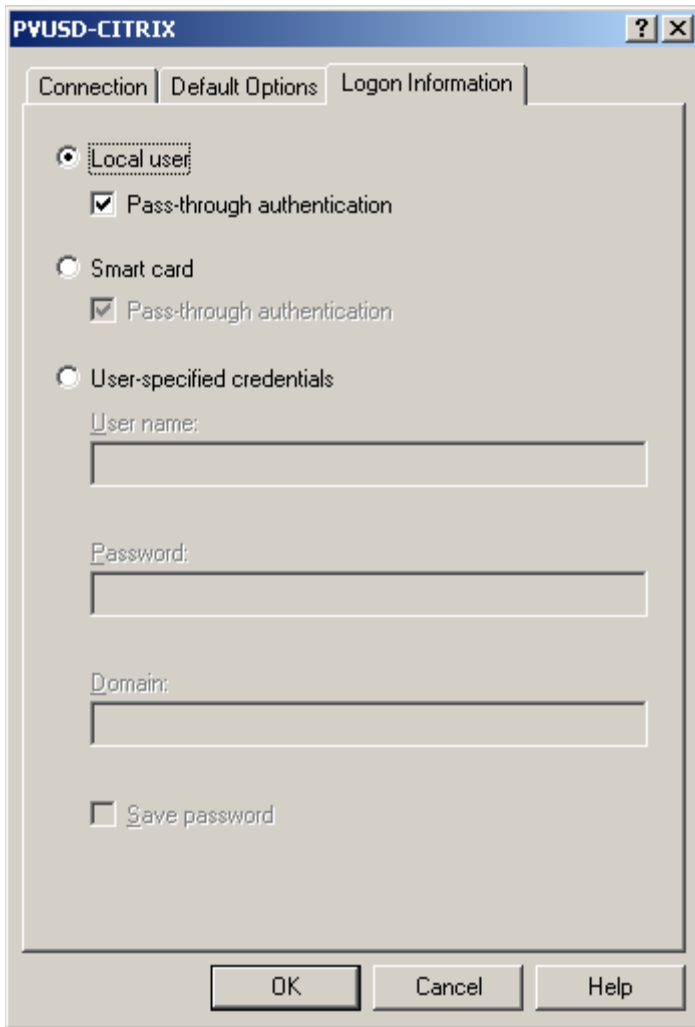
30. **Click Settings.**



31. If you don't want icons on your desktop, **Select Default Options** and **check Turn off desktop integration for this application set.** This will take all of the citrix icons off your desktop.



32. Logon Information should be set to **Local User** and **Pass-through authentication**. Click **OK**.



33. You should get a list of applications if you have been given any. **Close** the folder. Icons for commonly used applications should be on your desktop.

34. If you get a login window like this:

Please make sure that you have checked Local User and Pass-through authentication under Settings and make sure that Pass-Through Authentication and Use local credentials to log on found under Tools -> ICA Settings... Also you will need to reboot if you haven't...

